

Connecting Windows 7 non-DER machines to DER wireless

How to connect other Windows 7 laptops to
DER wireless

Tested on a standard school T4L Acer 6595 Windows 7 Laptop

Make sure your machine is 5GHz!

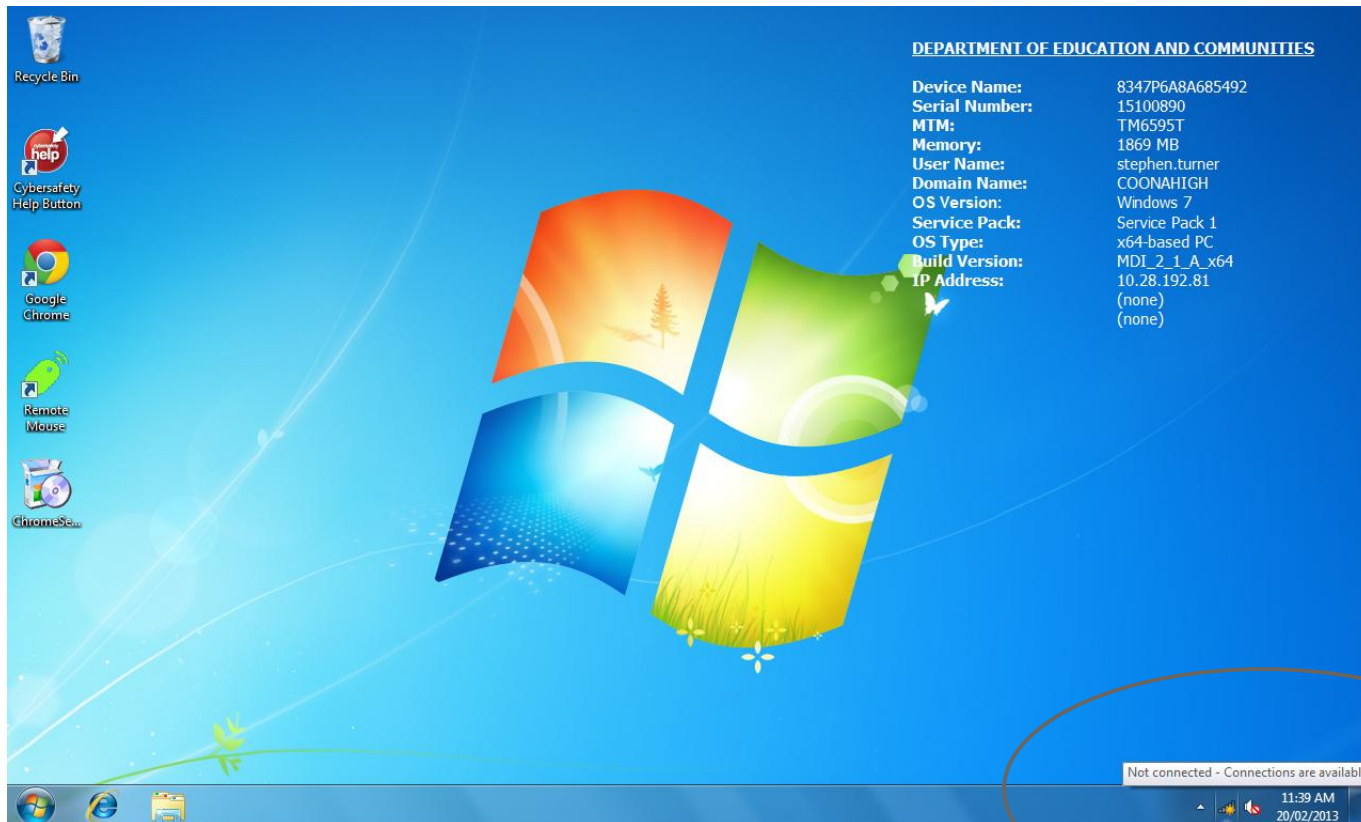
First, make sure you have 5GHz wireless on your machine -- this can also be called "dual band" wireless. Check your computer details!

If you can see
nswdet access
point, you are
probably safe



Select wireless connection

Click on the wireless connection icon:



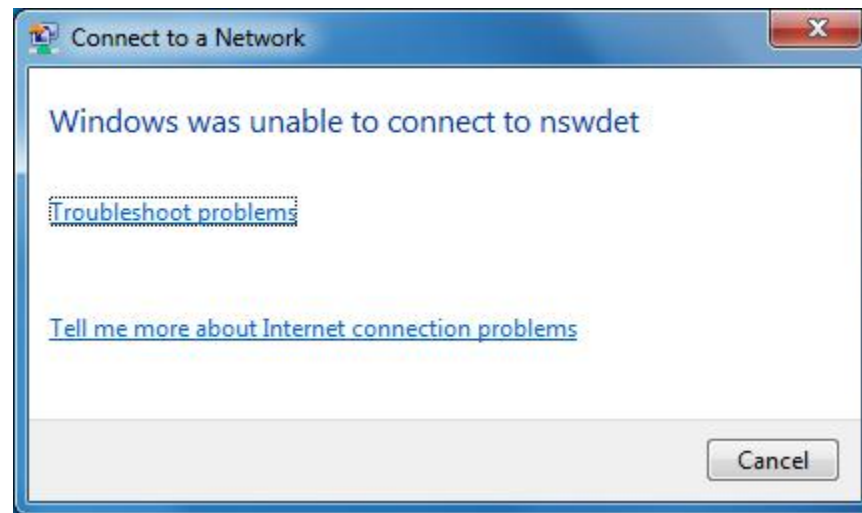
Select nswdet wireless connection

Click Connect:



If it fails at first...

You may find it succeeds here, otherwise...



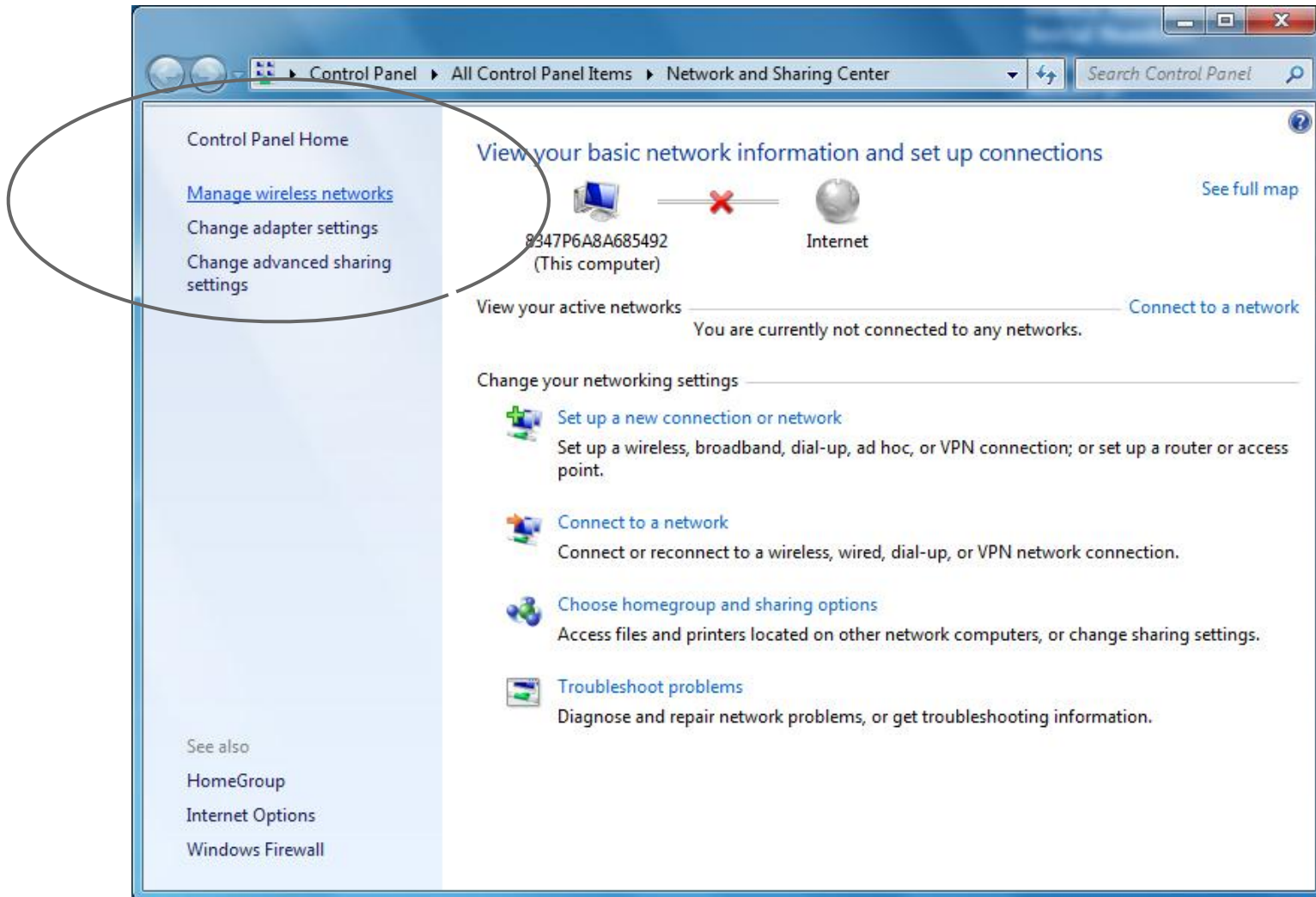
Click cancel

Open Network and Sharing Center



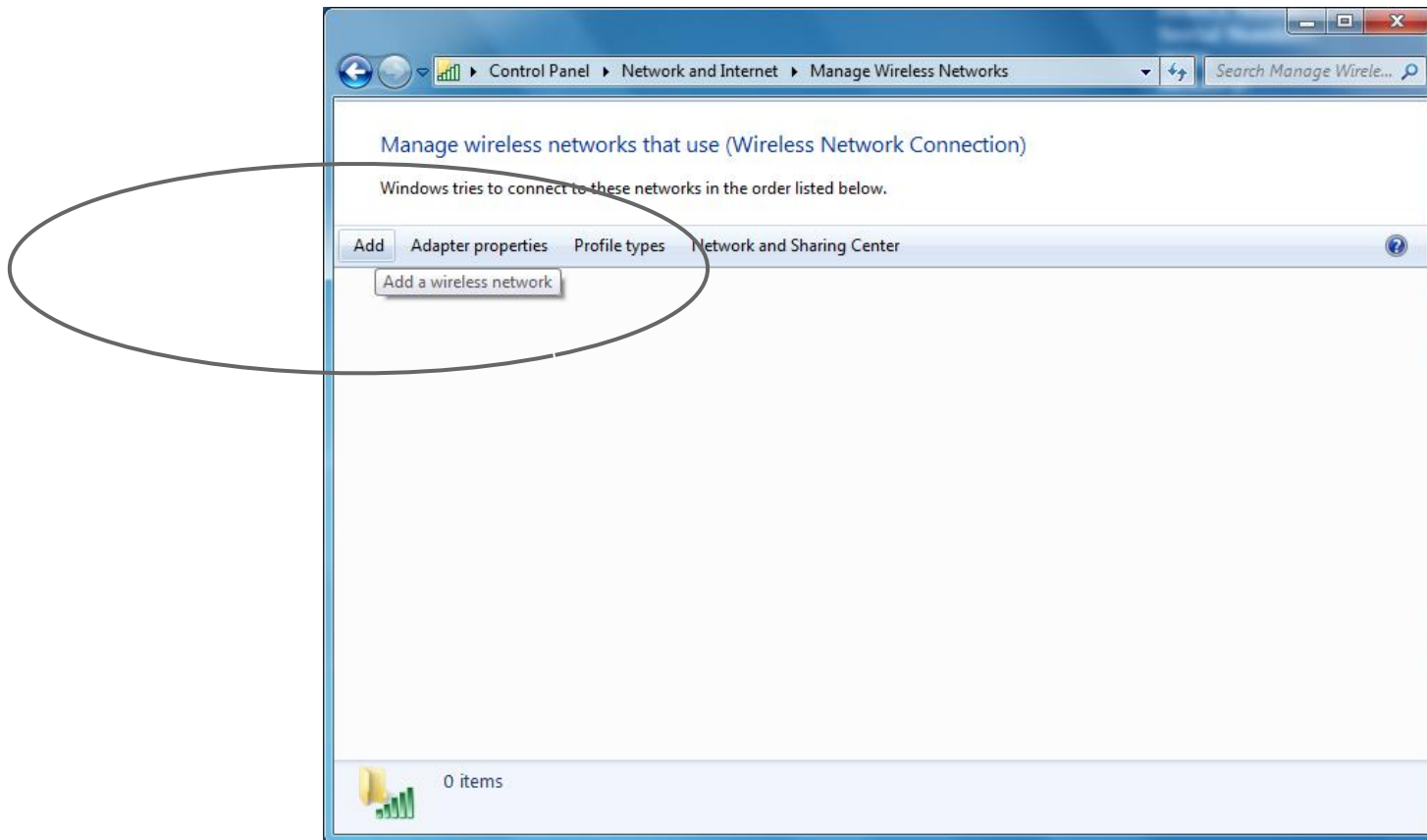
Open this

Click on Manage Wireless Networks



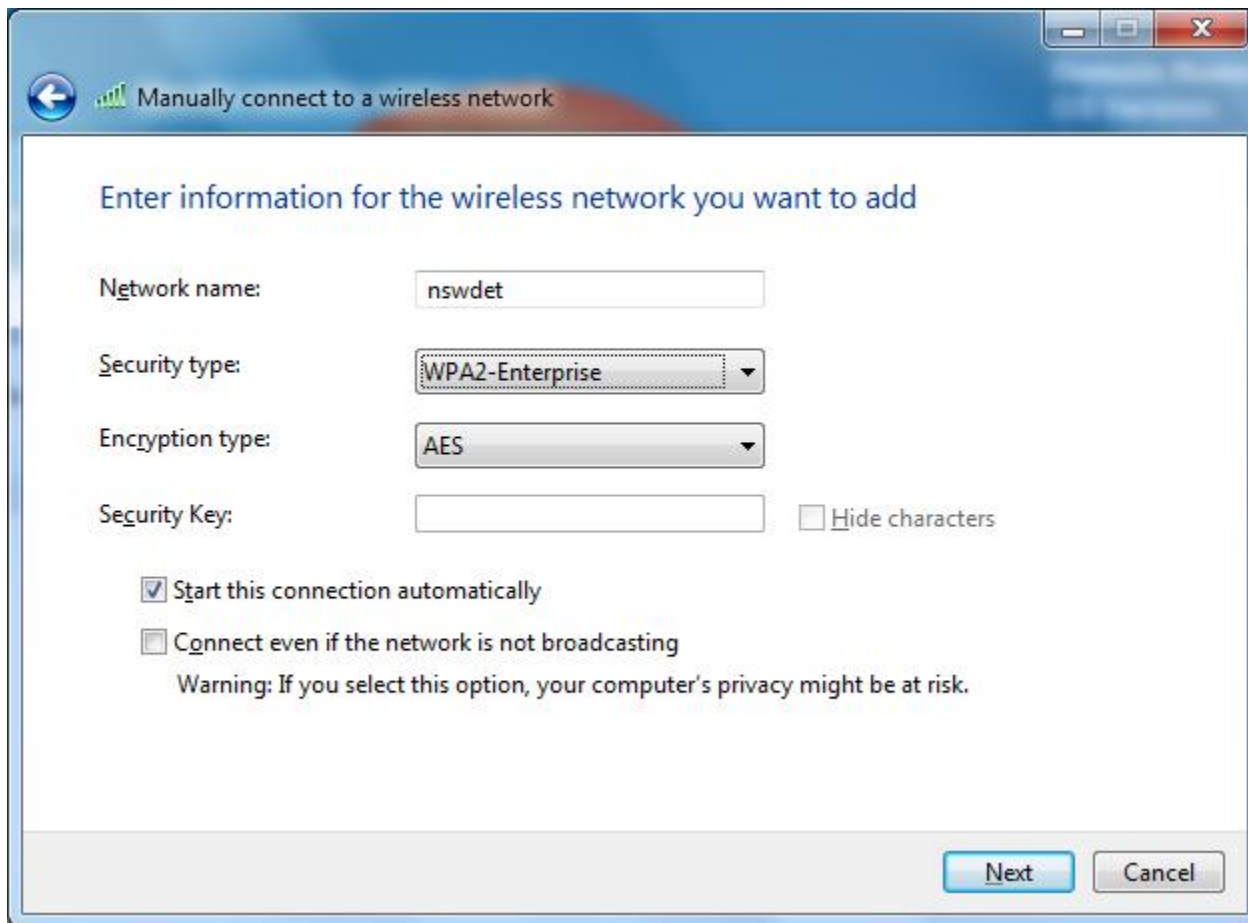
Add a new wireless network

Click Add to start the process



Add the connection details

Fill in the details as below:

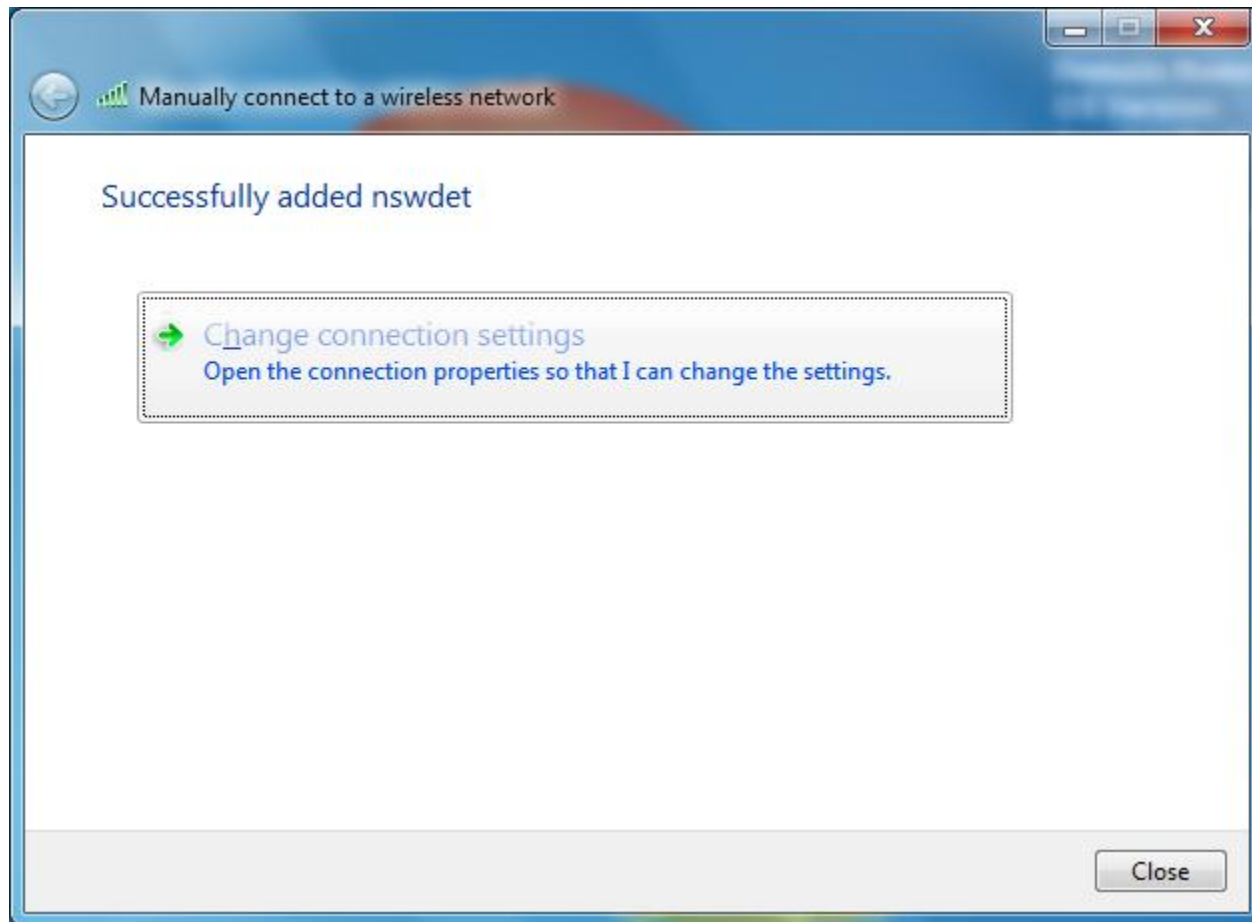


The image shows a Windows dialog box titled "Manually connect to a wireless network". The dialog box has a blue header bar with a back arrow icon and a signal strength icon. The main content area is white and contains the following fields and options:

- Network name:** A text input field containing "nswdet".
- Security type:** A dropdown menu with "WPA2-Enterprise" selected.
- Encryption type:** A dropdown menu with "AES" selected.
- Security Key:** A text input field that is currently empty, followed by a checkbox labeled "Hide characters" which is unchecked.
- Start this connection automatically**
- Connect even if the network is not broadcasting**
Warning: If you select this option, your computer's privacy might be at risk.

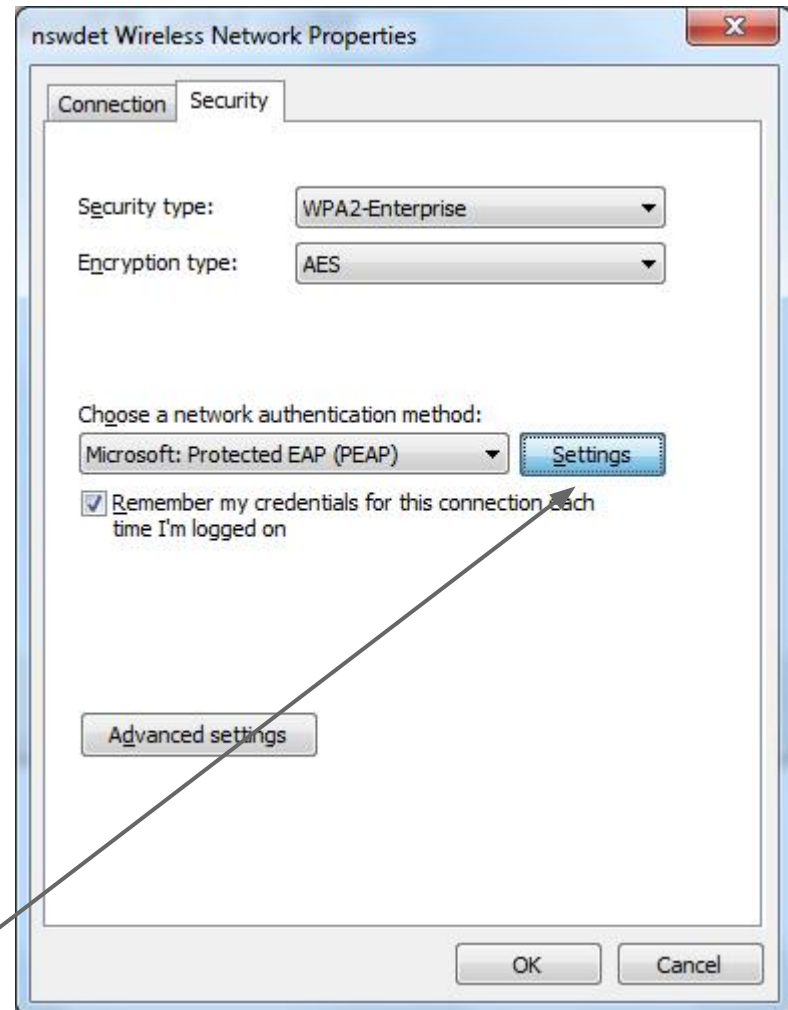
At the bottom right of the dialog box, there are two buttons: "Next" and "Cancel".

Click Change connection settings



Go to Security tab

Make sure the details are as follows:



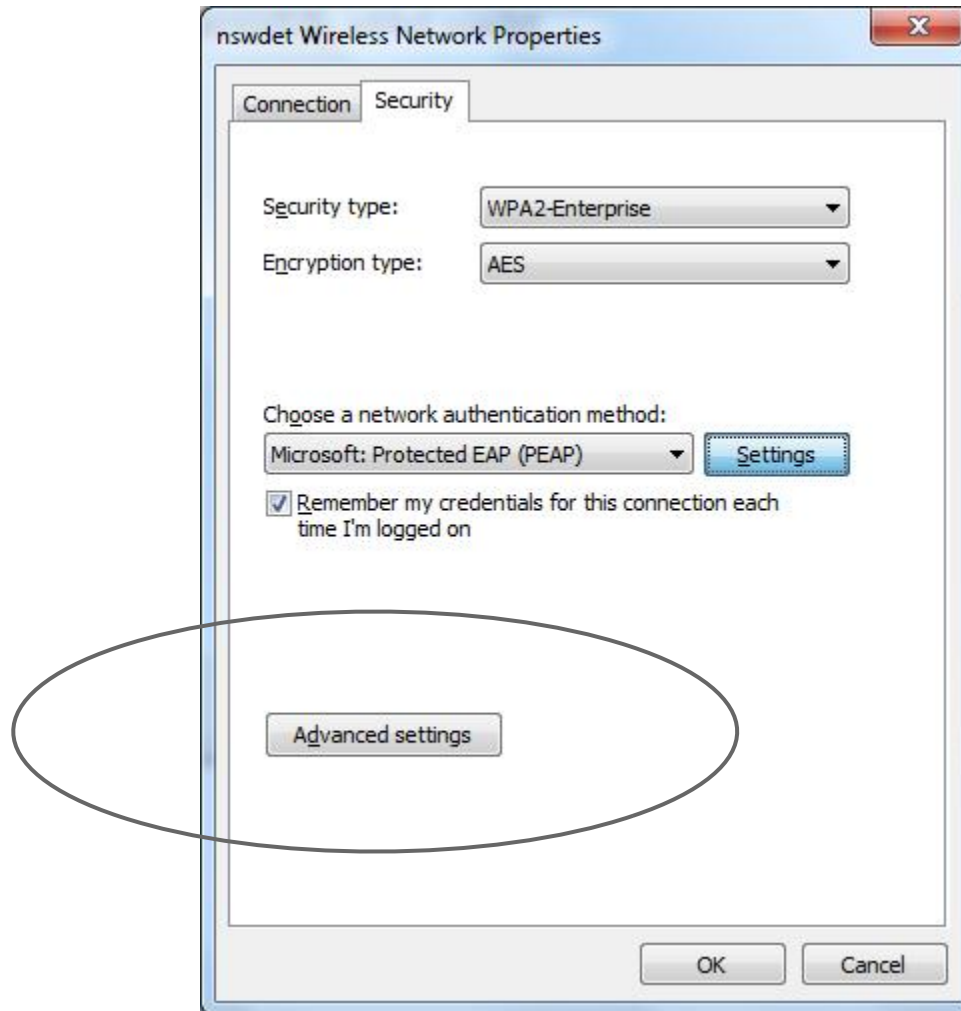
Click on Settings

Untick the box

Untick this option, click OK

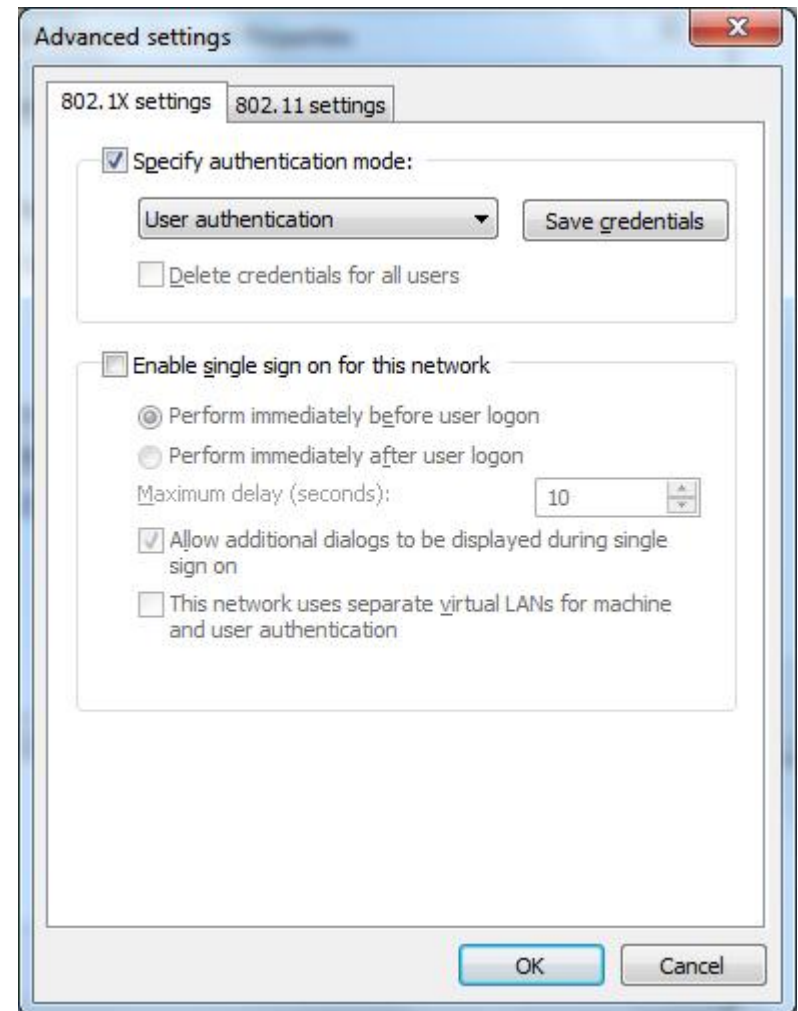


Click on Advanced settings



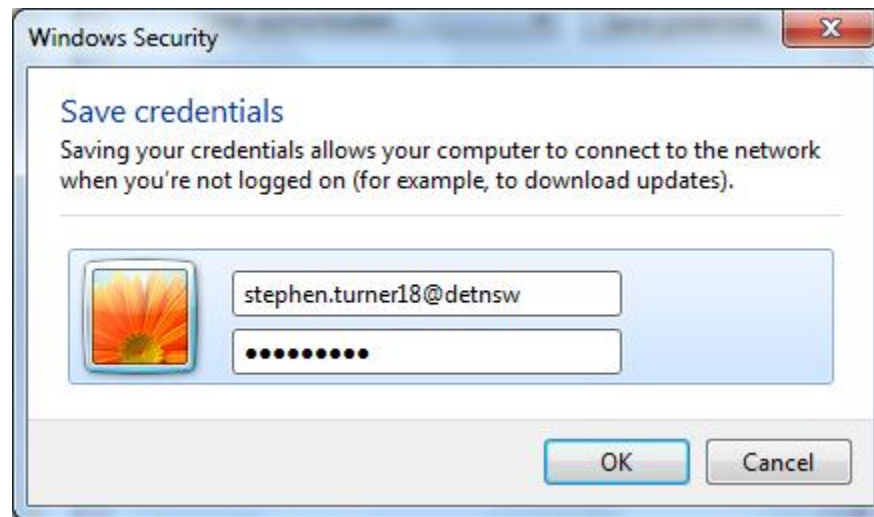
Change the settings as below

User authentication is the key here



Click on Save credentials

Put in your Internet username in the format below, adding @detnsw to username, then Internet password



Okay to exit, then done!

This should then allow you to connect, reselect the nswdet connection and connect manually if required.



Success!



Comment here if you need any help or have any questions.